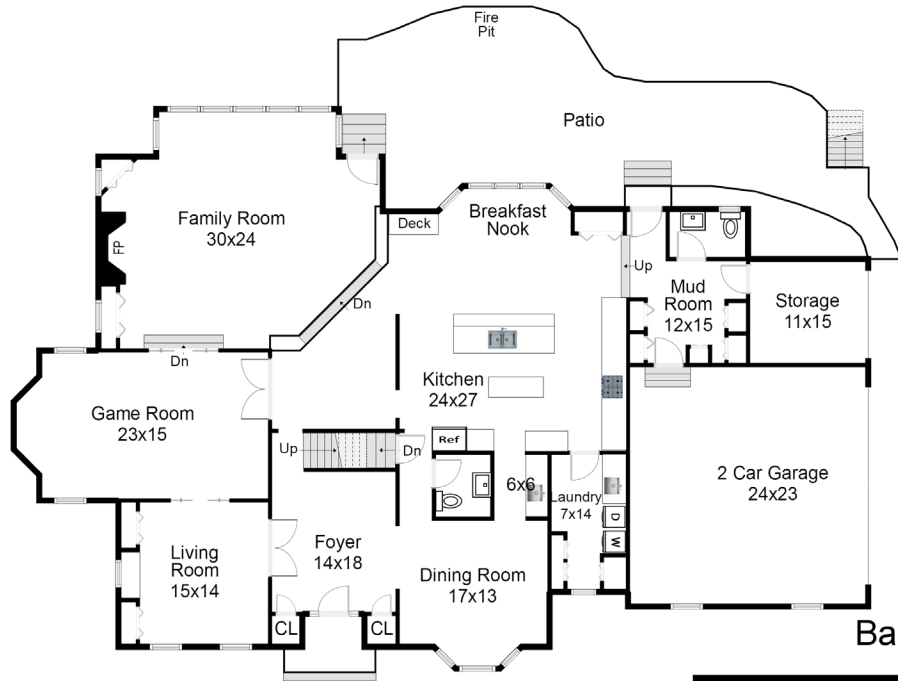


THE FLOOR PLAN

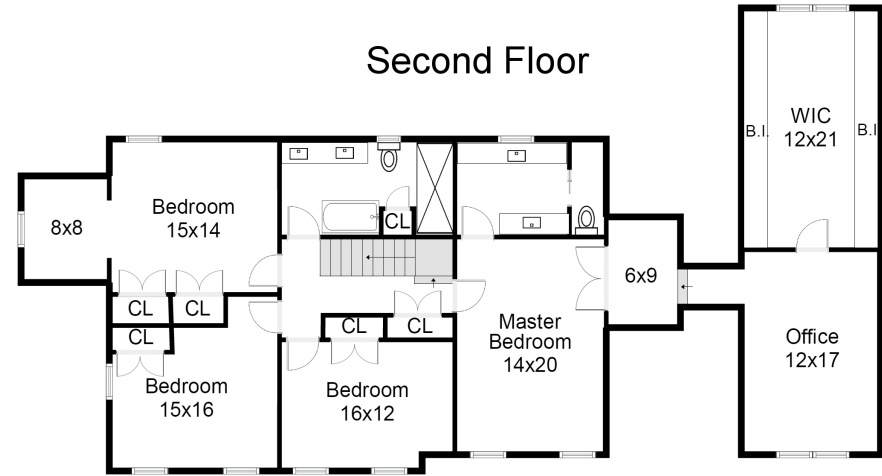
120 SHAWNEE PATH

MILLINGTON, NEW JERSEY

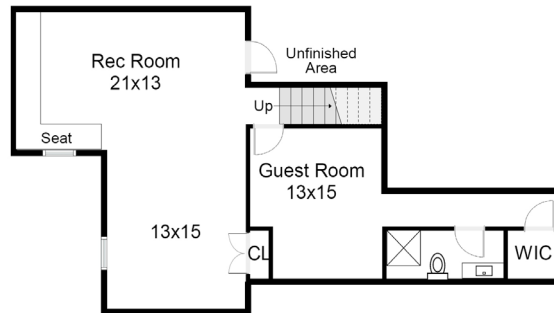
First Floor



Second Floor



Basement



ANNE QUINN
 SALES ASSOCIATE
 CELL: 908-433-0972
 OFFICE: 908-766-0808
 ANNE.QUINN@CBMOVES.COM



KIMBERLY CANNON
 BROKER/SALES ASSOCIATE
 INTERNATIONAL PRESIDENT'S ELITE
 CELL: 908-313-2855
 OFFICE: 908-522-1800
 KIM@KIMCANNON.COM
 WWW.KIMCANNON.COM

